



Fabrikant van **katalysatoren** en **deeltjesfilters**

NEDERLANDS ▾

KIA

25149



PK1394

OBD



405



2.30



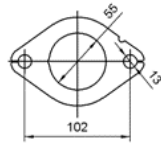
2

**Euro
6**

Originele ref.:

28600H8400

MERK	MODEL	DATUM
KIA	RIO 1.0i T-GDI 12V 998 cc 74 Kw / 101 cv G3LC, G3LE	10/16>7/20
KIA	RIO 1.0i T-GDI 12V 998 cc 88 Kw / 120 cv G3LC	10/16>7/20
KIA	STONIC 1.0i T-GDI 12V 998 cc 74 Kw / 101 cv G3LC	10/16>7/20
KIA	STONIC 1.0i T-GDI 12V 998 cc 88 Kw / 120 cv G3LC	10/16>7/20



Ø 50,8 ext

