



Fabricant de **catalyseurs** et **filtres à particules**

FRANÇAIS

AUDI, SEAT, VOLKSWAGEN

**33757D**



PK542



1100

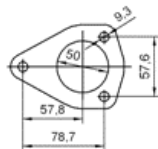


5.20

Réf. Original:

1J0253058GX, 1J0253058NX, 1J0254505PX, 1J0254505RX

MARQUE	MODÈLE	DATE
AUDI	A3 1.9TDi 1896 cc 66 Kw / 90 cv ALH	8/97>8/00
AUDI	A3 1.9TDi 1896 cc 81 Kw / 110 cv ASV/AHF	3/97>
SEAT	LEON 1.9TDi 1896 cc 66 Kw / 90 cv ALH	9/99>
SEAT	LEON 1.9TDi 1896 cc 81 Kw / 110 cv ASV/AHF	9/99>
SEAT	TOLEDO 1.9TDi 1896 cc 66 Kw / 90 cv ALH	6/99>
SEAT	TOLEDO 1.9TDi 1896 cc 81 Kw / 110 cv ASV/AHF	6/99>
<b>VOLKSWAGEN</b>	<b>BORA 1.9TDi 1896 cc 66 Kw / 90 cv ALH</b>	<b>8/98&gt;</b>
<b>VOLKSWAGEN</b>	<b>BORA 1.9TDi 1896 cc 74 Kw / 101 cv ATD</b>	<b>5/00&gt;3/04</b>
<b>VOLKSWAGEN</b>	<b>BORA 1.9TDi 1896 cc 81 Kw / 110 cv AHF</b>	<b>8/98&gt;</b>
<b>VOLKSWAGEN</b>	<b>GOLF IV 1.9TDi 1896 cc 66 Kw / 90 cv ALH</b>	<b>10/97&gt;</b>
<b>VOLKSWAGEN</b>	<b>GOLF IV 1.9TDi 1896 cc 74 Kw / 101 cv ATD</b>	<b>2/00&gt;3/04</b>
<b>VOLKSWAGEN</b>	<b>GOLF IV 1.9TDi 1896 cc 81 Kw / 110 cv AHF</b>	<b>10/97&gt;</b>
<b>VOLKSWAGEN</b>	<b>GOLF IV 1.9TDi 1896 cc 85 Kw / 115 cv AJM</b>	<b>5/98&gt;</b>
<b>VOLKSWAGEN</b>	<b>NEW BEETLE 1.9TDi 1896 cc 66 Kw / 90 cv ALH</b>	<b>11/98&gt;</b>
<b>VOLKSWAGEN</b>	<b>NEW BEETLE 1.9TDi 1896 cc 74 Kw / 101 cv ATD</b>	<b>10/00&gt;3/04</b>



Ø 54,8 ext

