



Fabricant de **catalyseurs** et **filtres à particules**

FRANÇAIS

LEXUS, TOYOTA

69012



PK1318

OBD



980

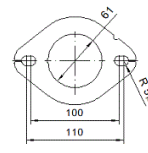
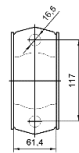


4.85



Réf. Original:
1741036190

MARQUE	MODÈLE	DATE
LEXUS	NX300h 2.5i VVTI 16V Full Hybrid 2494 cc 145 Kw / 197 cv 2ARFXE	7/14>
LEXUS	NX300h 2.5i VVTI 16V Full Hybrid 2494 cc 147 Kw / 200 cv 2ARFXE	11/18>
TOYOTA	RAV 4 2.5i VVTI 16V Full Hybrid 2494 cc 145 Kw / 197 cv 2ARFXE	10/15>9/18



Ø 60,2 ext