



KIA

25149

PK1394



405



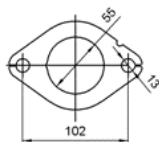
2.30



Réf. Original:

28600H8400

MARQUE	MODÈLE	DATE
KIA	RIO 1.0i T-GDI 12V 998 cc 74 Kw / 101 cv G3LC, G3LE	10/16>7/20
KIA	RIO 1.0i T-GDI 12V 998 cc 88 Kw / 120 cv G3LC	10/16>7/20
KIA	STONIC 1.0i T-GDI 12V 998 cc 74 Kw / 101 cv G3LC	10/16>7/20
KIA	STONIC 1.0i T-GDI 12V 998 cc 88 Kw / 120 cv G3LC	10/16>7/20



Ø 50,8 ext

