



Fabricant de **catalyseurs** et **filtres à particules**

FRANÇAIS

FORD

20456D



PK1150



700



4.00

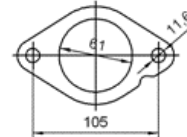


Euro
5

Réf. Original:

1681480, 1706906, 1728766, 1755322

| MARQUE | MODÈLE | DATE |
|--------|--|------------|
| FORD | GALAXY 2.0TD TDCI DPF 1997 cc 85 Kw / 116 cv KLWA, TYWA | 3/10>4/15 |
| FORD | GALAXY 2.0TD TDCI DPF 1997 cc 100 Kw / 136 cv UKWA | 3/10>4/15 |
| FORD | GALAXY 2.0TD TDCI DPF 1997 cc 103 Kw / 140 cv UFWA | 3/10>4/15 |
| FORD | GALAXY 2.0TD TDCI DPF 1997 cc 120 Kw / 163 cv TXWA | 3/10>4/15 |
| FORD | MONDEO 2.0TD TDCI DPF 1997 cc 85 Kw / 116 cv KLBA, LPBA, TYBA | 3/10>12/14 |
| FORD | MONDEO 2.0TD TDCI DPF 1997 cc 100 Kw / 136 cv UKBA, UKBB | 3/10>12/14 |
| FORD | MONDEO 2.0TD TDCI DPF 1997 cc 103 Kw / 140 cv UFBA, UFBB | 3/10>12/14 |
| FORD | MONDEO 2.0TD TDCI DPF 1997 cc 120 Kw / 163 cv TXBA, TXBB | 3/10>12/14 |
| FORD | S-MAX 2.0TD TDCI DPF 1997 cc 85 Kw / 116 cv KLWA, TYWA | 3/10>4/15 |
| FORD | S-MAX 2.0TD TDCI DPF 1997 cc 100 Kw / 136 cv UKWA | 3/10>4/15 |
| FORD | S-MAX 2.0TD TDCI DPF 1997 cc 103 Kw / 140 cv UFWA | 3/10>4/15 |
| FORD | S-MAX 2.0TD TDCI DPF 1997 cc 120 Kw / 163 cv TXWA | 3/10>4/15 |



Ø 66x90°

