



LEXUS, TOYOTA

**69012**



PK1318



980



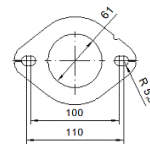
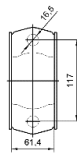
4.85



Orig.:

1741036190

MARCA	MODELO	FECHA
LEXUS	NX300h 2.5i VVTI 16V Full Hybrid 2494 cc 145 Kw / 197 cv 2ARFXE	7/14>
LEXUS	<b>NX300h 2.5i VVTI 16V Full Hybrid 2494 cc 147 Kw / 200 cv 2ARFXE</b>	11/18>
TOYOTA	RAV 4 2.5i VVTI 16V Full Hybrid 2494 cc 145 Kw / 197 cv 2ARFXE	10/15>9/18



Ø 60,2 ext