



HYUNDAI

61070



PK1213



310



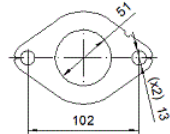
1.80



Orig.:

28605C8150

MARCA	MODELO	FECHA
HYUNDAI	i20 1.2i 16V 1248 cc 55 Kw / 75 cv G4LA	10/14>9/20
HYUNDAI	i20 1.2i 16V LPG 1248 cc 55 Kw / 75 cv G4LA	1/19>9/20
HYUNDAI	i20 1.2i 16V 1248 cc 62 Kw / 84 cv G4LA	10/14>9/20
HYUNDAI	i20 1.2i 16V LPG 1248 cc 62 Kw / 84 cv G4LA	10/14>6/19



Ø 44,8 ext

