



Fabricante de **catalizadores y filtros de partículas**

ESPAÑOL

AUDI, SEAT, VOLKSWAGEN

**33757D**



PK542



1100

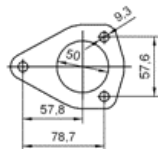


5.20

Orig.:

1J0253058GX, 1J0253058NX, 1J0254505PX, 1J0254505RX

MARCA	MODELO	FECHA
AUDI	A3 1.9TDi 1896 cc 66 Kw / 90 cv ALH	8/97>8/00
AUDI	<b>A3 1.9TDi 1896 cc 81 Kw / 110 cv ASV/AHF</b>	3/97>
SEAT	LEON 1.9TDi 1896 cc 66 Kw / 90 cv ALH	9/99>
SEAT	LEON 1.9TDi 1896 cc 81 Kw / 110 cv ASV/AHF	9/99>
SEAT	TOLEDO 1.9TDi 1896 cc 66 Kw / 90 cv ALH	6/99>
SEAT	TOLEDO 1.9TDi 1896 cc 81 Kw / 110 cv ASV/AHF	6/99>
VOLKSWAGEN	BORA 1.9TDi 1896 cc 66 Kw / 90 cv ALH	8/98>
VOLKSWAGEN	BORA 1.9TDi 1896 cc 74 Kw / 101 cv ATD	5/00>3/04
VOLKSWAGEN	BORA 1.9TDi 1896 cc 81 Kw / 110 cv AHF	8/98>
VOLKSWAGEN	GOLF IV 1.9TDi 1896 cc 66 Kw / 90 cv ALH	10/97>
VOLKSWAGEN	GOLF IV 1.9TDi 1896 cc 74 Kw / 101 cv ATD	2/00>3/04
VOLKSWAGEN	GOLF IV 1.9TDi 1896 cc 81 Kw / 110 cv AHF	10/97>
VOLKSWAGEN	GOLF IV 1.9TDi 1896 cc 85 Kw / 115 cv AJM	5/98>
VOLKSWAGEN	NEW BEETLE 1.9TDi 1896 cc 66 Kw / 90 cv ALH	11/98>
VOLKSWAGEN	NEW BEETLE 1.9TDi 1896 cc 74 Kw / 101 cv ATD	10/00>3/04



Ø 54,8 ext

