



ENGLISH ▾

Manufacturer of **catalytic converters** and **particulate filters**

TOYOTA

**95173**



PK1187

**OBD**



mm.  
↔

1315

Kg.  
⬆

7.90



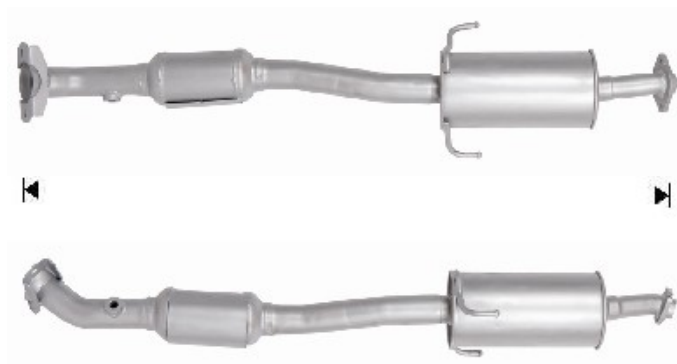
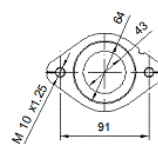
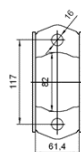
**2**

**Euro  
6**

OE

174100TA90

MAKE	MODEL	DATE
TOYOTA	C-HR 1.8i 16V Full Hybrid 1798 cc 90 Kw / 122 cv 2ZRFXE	10/16>



Ø 42,8 ext