



SEAT, SKODA, VOLKSWAGEN

**37928**

PK827



620



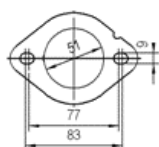
2.70



Original-Artikelnummer:

1K0254400BX, 1K0254401EX, 1K0254401X

MARKE	MODELL	DATUM
SEAT	ALTEA 1.4i 16V 1390 cc 63 Kw / 86 cv BXW	5/06>10/06
SEAT	LEON 1.4i 16V 1390 cc 63 Kw / 86 cv BXW	6/06>10/06
SEAT	TOLEDO 1.4i 16V 1390 cc 63 Kw / 86 cv BXW	5/06>10/06
<b>SKODA</b>	OCTAVIA 1.4i 16V 1390 cc 55 Kw / 75 cv BCA	5/04>5/06
<b>SKODA</b>	<b>OCTAVIA 1.4i 16V 1390 cc 59 Kw / 80 cv BUD</b>	5/06>5/07
VOLKSWAGEN	CADDY 1.4i 16V 1390 cc 55 Kw / 75 cv BCA	2/04>5/06
VOLKSWAGEN	CADDY 1.4i 16V 1390 cc 59 Kw / 80 cv BUD	5/06>10/06
VOLKSWAGEN	GOLF PLUS 1.4i 16V 1390 cc 55 Kw / 75 cv BCA	1/05>5/06
VOLKSWAGEN	GOLF PLUS 1.4i 16V 1390 cc 59 Kw / 80 cv BUD	5/06>10/06
VOLKSWAGEN	GOLF V 1.4i 16V 1390 cc 55 Kw / 75 cv BCA	10/03>5/06
VOLKSWAGEN	GOLF V 1.4i 16V 1390 cc 59 Kw / 80 cv BUD	5/06>10/06



Ø 44,8 ext.

