



Hersteller von **Katalysatoren** und **Partikelfiltern**

DEUTSCH ▾

MERCEDES

**71281**



PK1205



1000



7.10

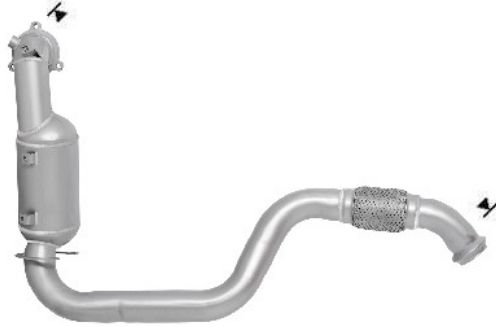
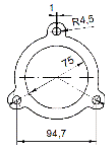


Euro  
6

Original-Artikelnummer:

2464900710

MARKE	MODELL	DATUM
MERCEDES	A160 1.6i 16V Turbo 1595 cc 75 Kw / 102 cv 270910 (176)	9/15>5/18
MERCEDES	A180 1.6i 16V Turbo 1595 cc 90 Kw / 122 cv 270910 (176)	2/13>5/18
MERCEDES	A200 1.6i 16V Turbo 1595 cc 115 Kw / 156 cv 270910 (176)	9/12>5/18
MERCEDES	A220 2.0i 16V Turbo 1991 cc 135 Kw / 184 cv 270920 (176)	5/14>5/18
MERCEDES	A250 2.0i 16V Turbo 1991 cc 155 Kw / 211 cv 270920 (176)	9/12>5/18
MERCEDES	A250 2.0i 16V Turbo 1991 cc 160 Kw / 218 cv 270920 (176)	9/15>5/18
MERCEDES	B160 1.6i 16V Turbo 1595 cc 75 Kw / 102 cv 270910 (246)	7/15>9/18
MERCEDES	B180 1.6i 16V Turbo 1595 cc 90 Kw / 122 cv 270910 (246)	9/11>9/18
MERCEDES	B200 1.6i 16V Turbo 1595 cc 115 Kw / 156 cv 270910 (246)	9/11>9/18
MERCEDES	B220 2.0i 16V Turbo 1991 cc 135 Kw / 184 cv 270920 (246)	9/13>3/19
MERCEDES	B250 2.0i 16V Turbo 1991 cc 155 Kw / 211 cv 270920 (246)	9/12>9/18
MERCEDES	CLA180 1.6i 16V Turbo 1595 cc 90 Kw / 122 cv 270910 (117)	2/13>3/19
MERCEDES	CLA200 1.6i 16V Turbo 1595 cc 115 Kw / 156 cv 270910 (117)	2/13>3/19
MERCEDES	CLA250 2.0i 16V Turbo 1991 cc 155 Kw / 211 cv 270920 (117)	2/13>3/19
MERCEDES	CLA250 2.0i 16V Turbo 1991 cc 160 Kw / 218 cv 270920 (117)	9/15>3/19
MERCEDES	GLA180 1.6i 16V Turbo 1595 cc 90 Kw / 122 cv 270910 (156)	11/14>12/19
MERCEDES	GLA200 1.6i 16V Turbo 1595 cc 115 Kw / 156 cv 270910 (156)	11/13>12/19
MERCEDES	GLA220 2.0i 16V Turbo 1991 cc 135 Kw / 184 cv 270920 (156)	11/13>12/19
MERCEDES	<b>GLA250 2.0i 16V Turbo 1991 cc 155 Kw / 211 cv 270920 (156)</b>	11/13>12/19
MERCEDES	GLA250 2.0i 16V Turbo Flexifuel 1991 cc 155 Kw / 211 cv 270920 (156)	1/15>12/19



Ø 65.0 ext